

Eyeonet II Platform Server

USER' S GUIDE

2011, 11 Toronto Canada

Introductions

Thank you for choosing Eyeonet II Platform Server System. This Quick manual is to introduce how to setup the system and explain the major functionality of the system.

System Configuration

- Working as NVR:
Eyeonet II Platform Server+ Eyeonet II Platform Software + License
- Working as Hybrid:
Eyeonet II Platform Server+Software+License +DV-HB card
- Working as HD-SDI:
Eyeonet II Platform Server+Software+DV-HD-SDI card
- Working as DVR:
Eyeonet II Platform Server+DV-HD-SDI card

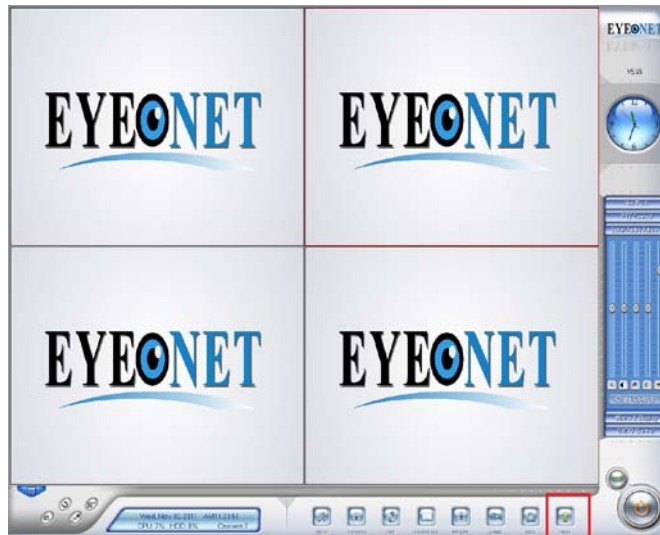
When Eyeonet II Platform Server works as a NVR or Hybrid DVR, it must work with a USB software key, each USB key has one Unique serial number, there is at least one license in the USB key. Without the USB key, the server can not work with IP cameras. Please take good care of it and keep it safe. If one server needs to support multiple IP cameras, the license file can be added to the USB key.

Chapter1 IP Camera Setup

For IP camera setup, please follow the instructions as below.

1. Adding IP Cameras

Turn on the Server, then you will see the following interface, click on the button “Menu”,



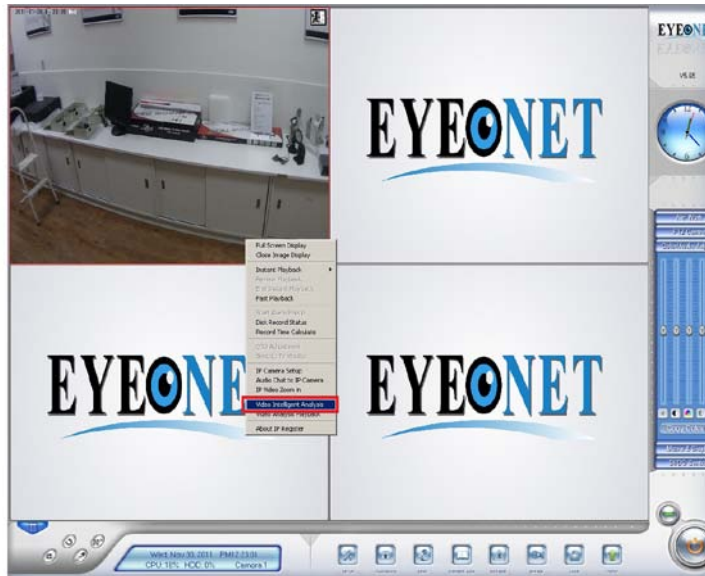
Then choose “Add/del IP Camera”



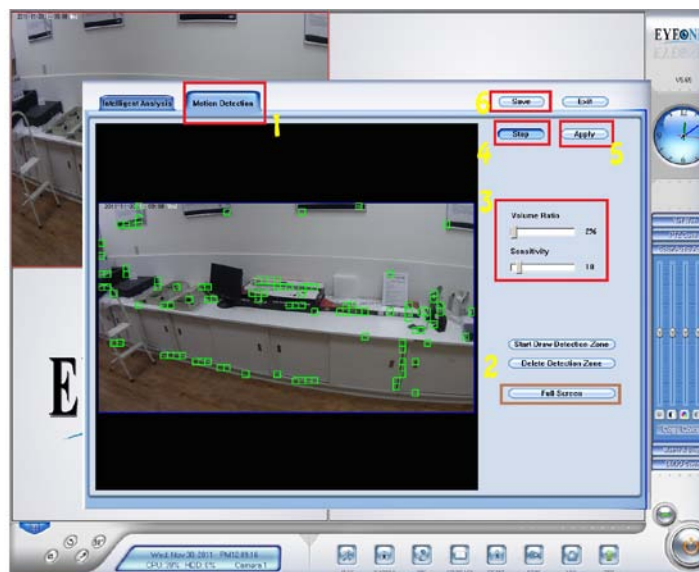
IP camera list will show up and follow step 1-6 to finish adding IP cameras.

2. Setting up Motion detection recording

Right click the IP camera, then a setup manual will pop up, then select: video intelligent analysis,

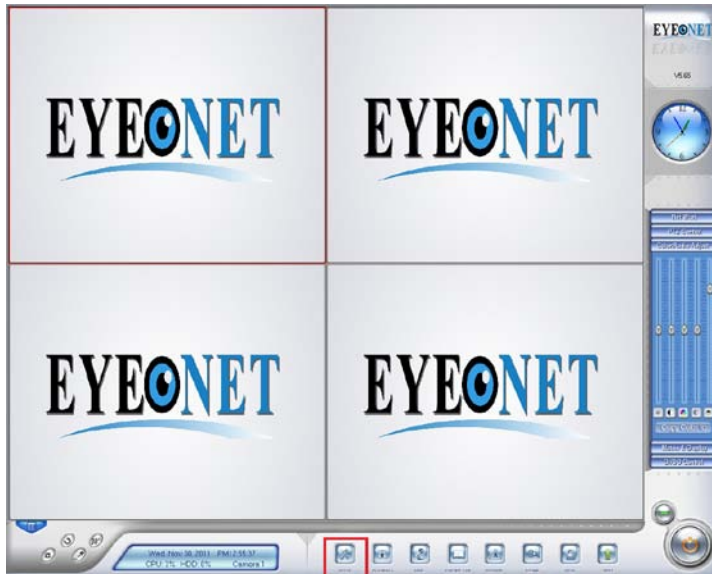


Then, choose tab “motion detection”, setup area, apply and then save.

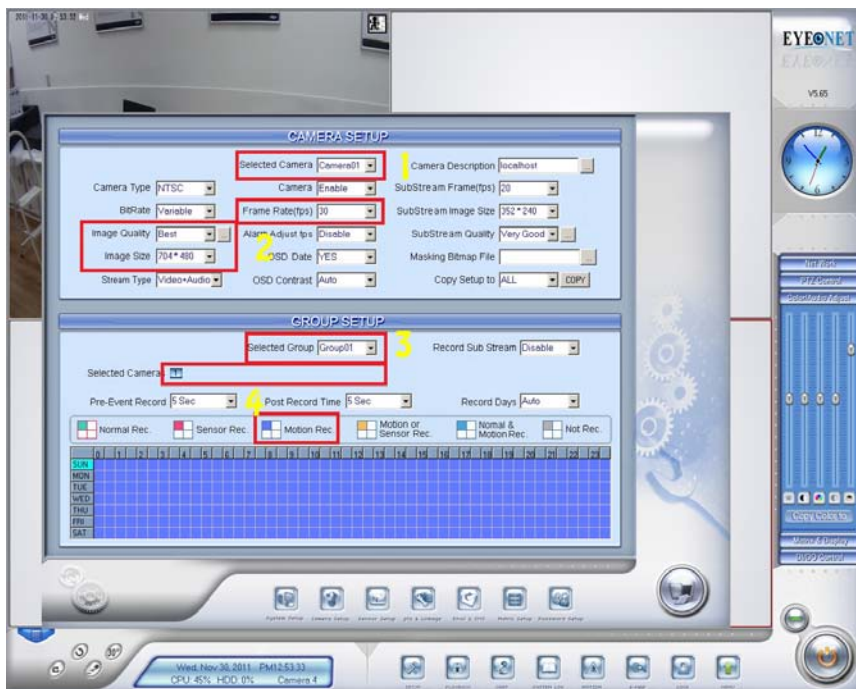


3. Setup Recording Schedule

Go back to the main page, click the button “Setup”,



Click the button “ camera setup” , then setup the camera as you required.



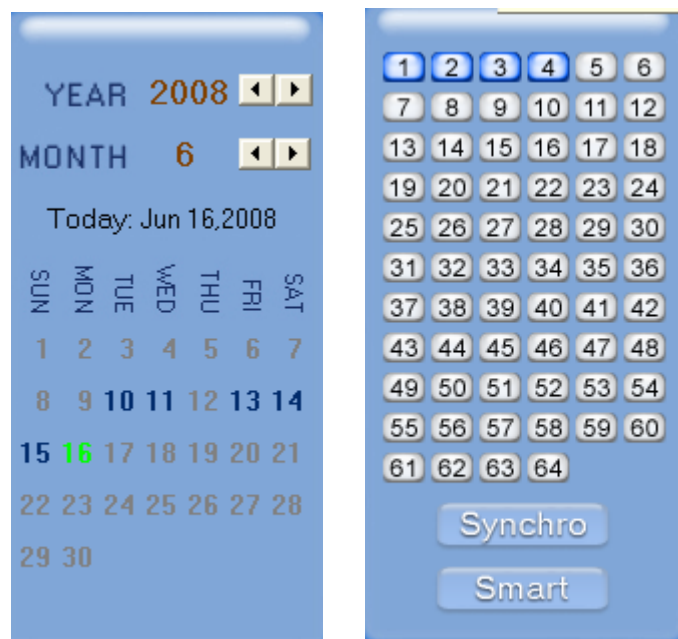
Chapter2 Playback & Back up



Click  button in main interface to enter playback interface.



2.1 Steps of Playback

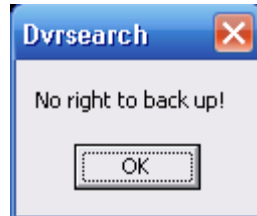



You can search by Date, recording type, Camera. You can also narrow down your search by using Smart Search, by recorded files for certain camera.

2.2 Backup

Note:

This feature will be performed by the person who has authority. If a user has no authority, the following dialog will be shown:



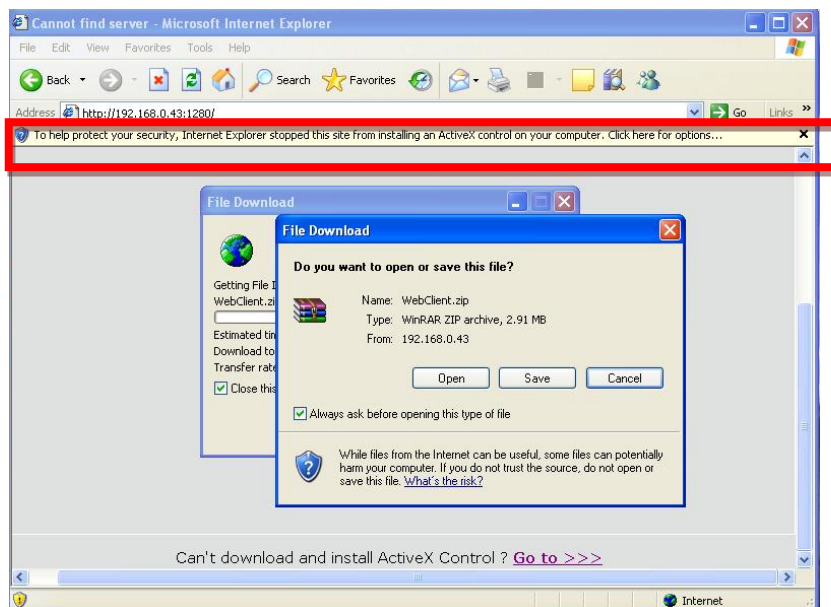
Click button , there are four ways for backup. You can back up by time, by creating a video clip, or burning the data into a CD/DVD.

Chapter3 IE Client

Client user can remote access Eyeonet II Platform Server through Internet Explorer. The default web server port is 80. If user changes it to other port, user should add this port number after IP or domain name. E.g.: <http://192.168.0.119:1280>.

When you first time to log in through IE, usually under the address bar, you will see a message as below in red box, then follow the instruction and install the Active X

In case you are not able to install the Active X, you can download webclient.zip manually via clicking “Go to”. Then, the following interface will be shown:



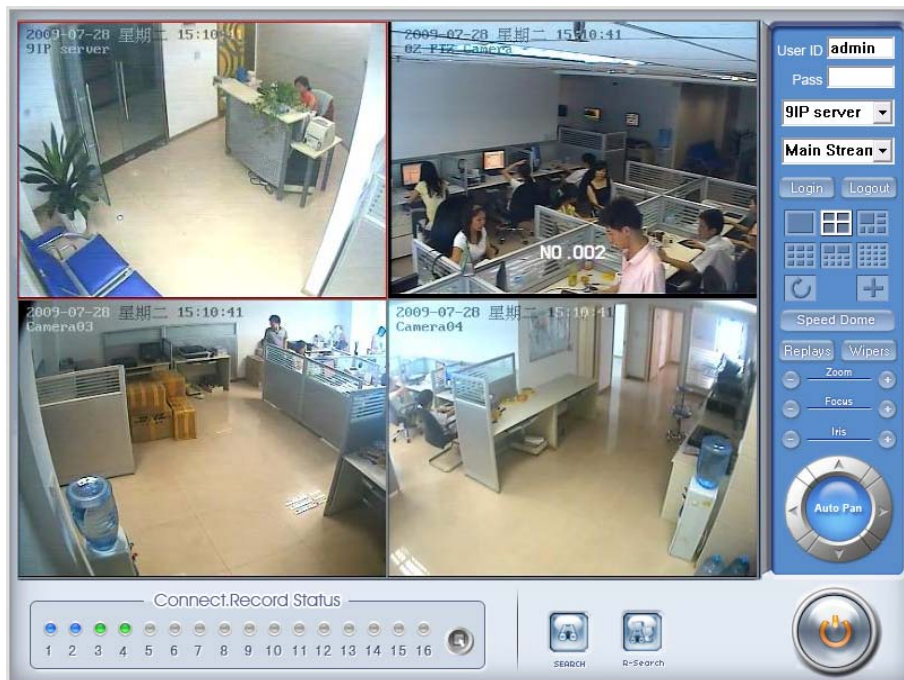
Save and install webclient on your PC, so that you can install ActiveX successfully later.

3.1 Functions of IE Client



1. Video display and video storage;
2. Audio input;
3. Searching and playback video image locally or remotely;
4. Control PTZ and speed demo remotely.

3.2 Main Interface

When you connect foreside server successfully, you should input valid User ID and password in right up of the interface to acquire rights to play video and other operations. If you can't connect it, you can refer to **help**.



3.2.1 Connection Operations

Press **Login** will connect the DVR Server's camera video from **Camera01** and press **Logout** will disconnect all connections. If DVR Server's channel is more than channels that you selected partition mode, you can use  button to display DVR Server's video in sequence. Pressing button  will switch full screen mode and Right-Single-Click image can back to normal mode.

3.2.2 Connection/Record Status




This icon indicates the current connection and their record status:

Gray: Not connected;

Navy blue: Connected with no recording;

Green: Connected with recording.

You can change the record status by pressing corresponding number buttons or change status of all connections at the same time by pressing  button.

3.2.3 Partition Mode

You can set the partition mode by pressing a corresponding button on the right of main interface. There are 6 partition modes as below:




3.2.4 PTZ Control

Most functions of PTZ control are the same as [PTZ Control Panel](#) in DVR Server.


3.2.5 Search/R-search

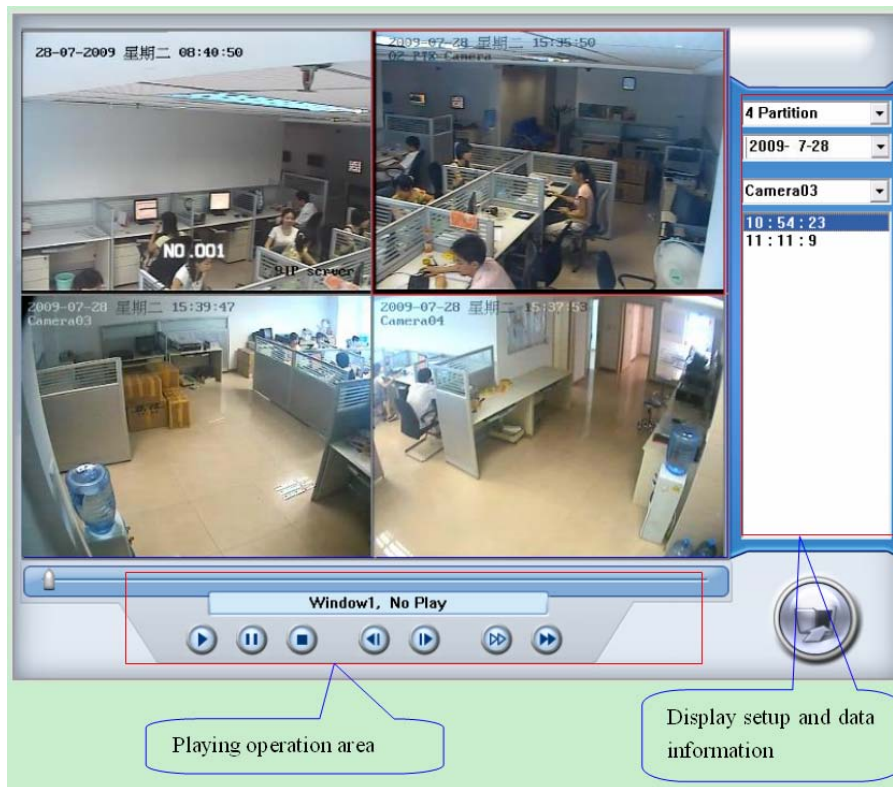
The two functions will be detail described in [Local Search](#) and [Remote Search](#).

3.2.6 Quit Program

Press  button to shut down the IE Client.

3.3 Local Search

Press  button to enter local search:




3.3.1 Display Setup and Data Information

In this area, you can select display partition mode, date, video channel and video file named according to time.

3.3.2 Playing Operation Area

In this area, you can operate video playing:



【 Video-playing time adjustment 】 Press and drag slider bar  to adjust video-playing time.

【 Information display panel 】 Display current window's name, camera's name and record data's information.

Window1, Camera1, 00:00:09 / 00:17:17

【 Playing-control buttons 】    : Play Pause Stop


【 Single frame play 】   : Previous frame Next frame

【 Playing speed control 】  Slowly play  Fleety play.


3.4 Remote Search

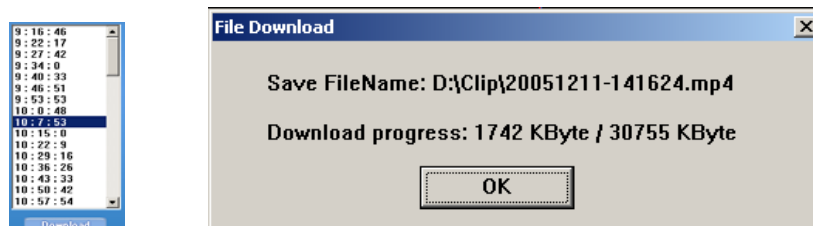
Most functions and operations of Remote search are the same as [Playback](#). The different feature is that remote search added download feature.



When you playback remotely, clicking  button, system will save video of current channel you selected. After finishing it, system will inform the save path.

3.4.1 Fast Download Record Data

In the playback mode, select one camera that there is record data, open file list panel, select one record data file, and click  button, the selected data file will download fast.



Chapter4 Mobile Client

For Iphone, go to “app store” to download: Net PCDvrviewer

For Andriod, go to “Market” to download: Net PCDvrviewer

For Blackberry and other smart phones.

4.1 download mobile client software

You have the following methods to download our mobile client software from Eyeonet II server:

1. Download through wireless technology (in Wireless LAN) such as Blue tooth, infrared etc.
2. Copy mobile client software to phone directly through data cable.
3. Download mobile client software through OTA (in WAN), it will be described as follow:

Enter “http://Eyeonet II server IP: PORT/MobileDvr in the address bar of the mobile phone browser to download the setup package of the Mobile Client.

Note:

IP: the IP address of the Eyeonet II server.

PORT: the Port of the IE client of the DVR server. Default Port : 5300

OTA: WAN IP address

When you download mobile client software on WAN, you must be sure that your mobile phone connect with Internet correctly.

When you are not sure which program you should download to your phone, you can only enter <http://IP:port/mobiledvr>, such as: http: 124.96.24.3:5300/mobiledvr. Then, you will enter the following interface:

**Normal Mobile
Client(Java):**

[**MobileDvr.jad**](#)

BlackBerry

Client(Java):

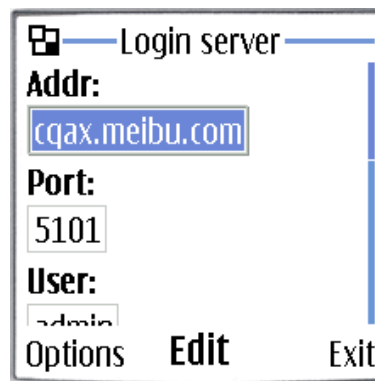
[**BlackBerry.jad**](#)

Select one and then enter it. When you are using BlackBerry, you would better select the “BlackBerry.jad”. If you choose “MobileDvr.jad”, the image quality will be too poor.

4.2 Install and Connect

After downloading, you can just follow the wizard to install the program on your mobile phones. Please make sure your mobile phone provider supporting WAP and WEB access point at the same time. You will see a Icon on the phone.

Enter the Icon and run the mobiledvr program on your mobile phone.



The screenshot shows a 'Login server' dialog box with the following fields and buttons:

- Addr:** cqax.meibu.com
- Port:** 5101
- User:** admin
- Buttons: Options, Edit, Exit

【Addr】 Fill the IP address or domain name of the Eyeonet II server.

【Port】 Fill the port number 5101 through which connects to Eyeonet II Server.

【User】 / 【Pass】 Fill the valid user with its password to visit server from MobileDVR. The user setup needs to be done in the Eyeonet II server.

Click **Options** and select **Login** to connect with the Eyeonet II server.